

2050-200

ODOR CONTROL SYSTEMS



WAGER
C O M P A N Y

570 MONTROAL RD, RURAL HALL, NC 27045

(336) 969-6909 • 1-800-562-7024 (US) • WWW.WAGERUSA.COM

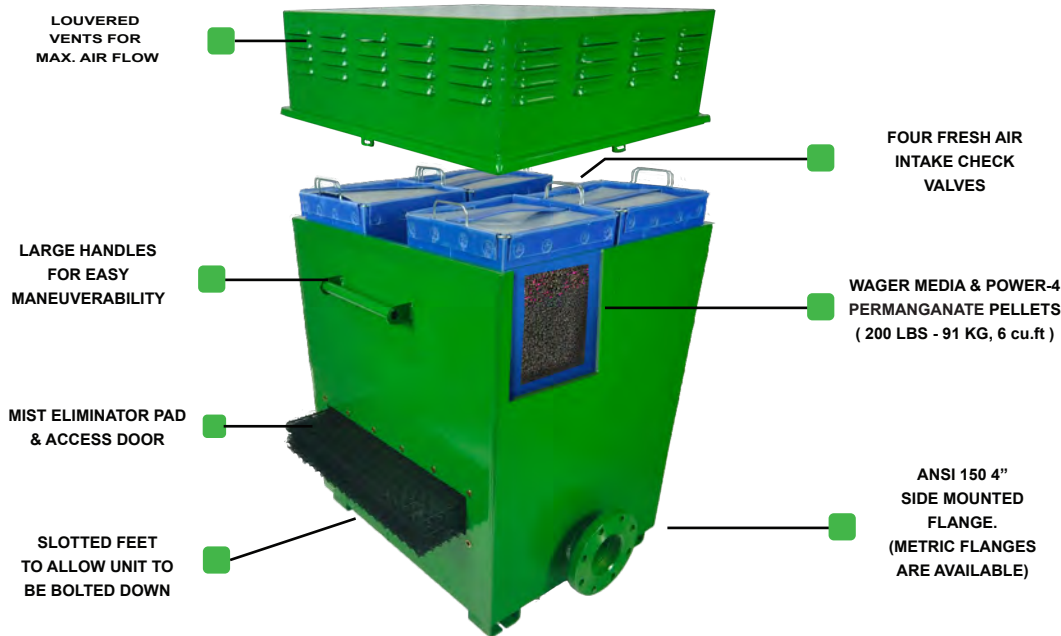
2050-200

ODOR CONTROL SYSTEMS

The 2050-200 is designed to be used at lift stations, wet wells and forced mains. It's attractive appearance allows for installations in both residential and commercial sites where higher airflows and concentrations of H2S gas are resulting in odor complaints and potential health hazards. The unit accommodates 200 lbs (91 kg- 6cu.ft) of Wager engineered media in four 50 LBS (23kg) canisters.

Constructed from aluminum, the 2050-200 is epoxy coated grass green so that it fits nicely into the surrounding environment. A mist eliminator pad is incorporated into the unit to prevent damage to the media bed from moisture.

Installing the unit is made easy with slotted feet which can be bolted to a cement slab. The unit is equipped with tamper proof lockable latches.



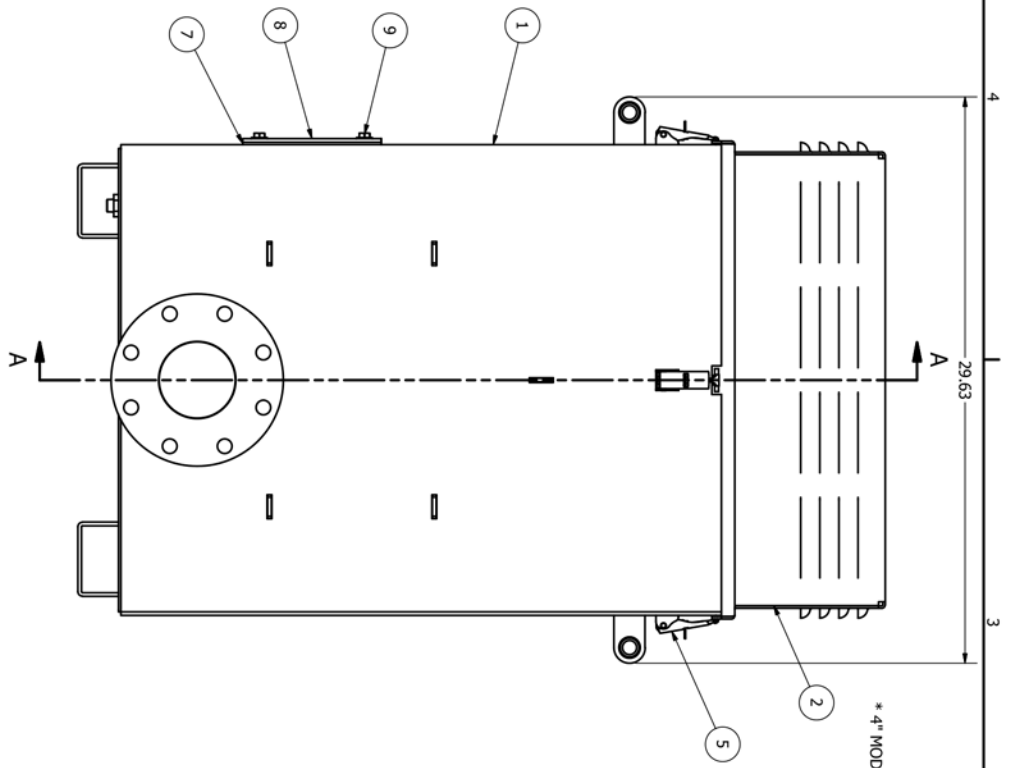
SPECIFICATIONS

4-2050 FAPC-IWS- 200	SIDE ACCESS MOUNT	MEDIA CAPACITY Est. 200 LBS. (91kg)	4 CANISTER	4 INTAKE VALVES	1 MIST PADS	EST CFM. 250-300
6-2050 FAPC-IWS- 200	SIDE ACCESS MOUNT	MEDIA CAPACITY Est. 200 LBS. (91kg)	4 CANISTER	4 INTAKE VALVES	1 MIST PADS	EST CFM. 250-300

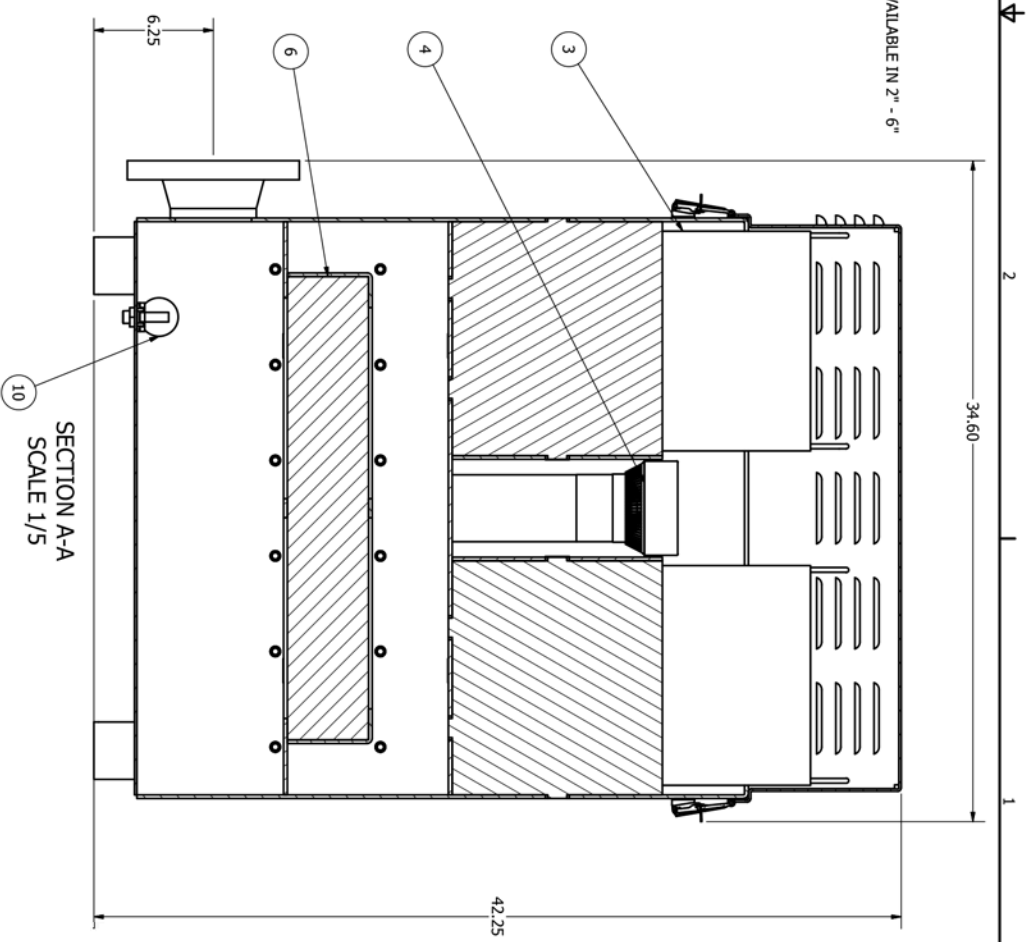


WAGER
C O M P A N Y

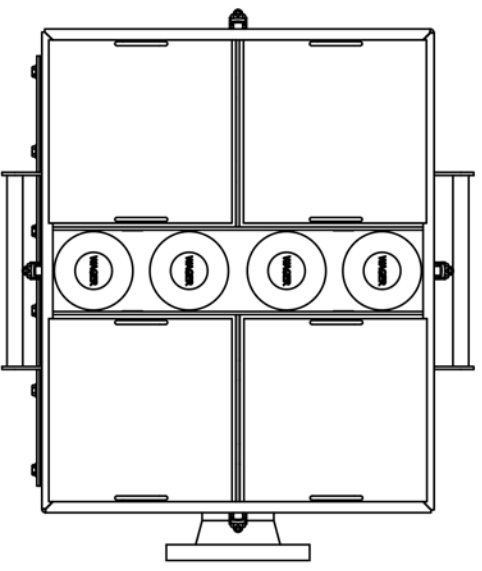
www.wagerusa.com
336.9696909
LWager@wagerusa.com
Mpowers@wagerusa.com



* 4" MODEL SHOWN, AVAILABLE IN 2" - 6"



SECTION A-A
SCALE 1/5



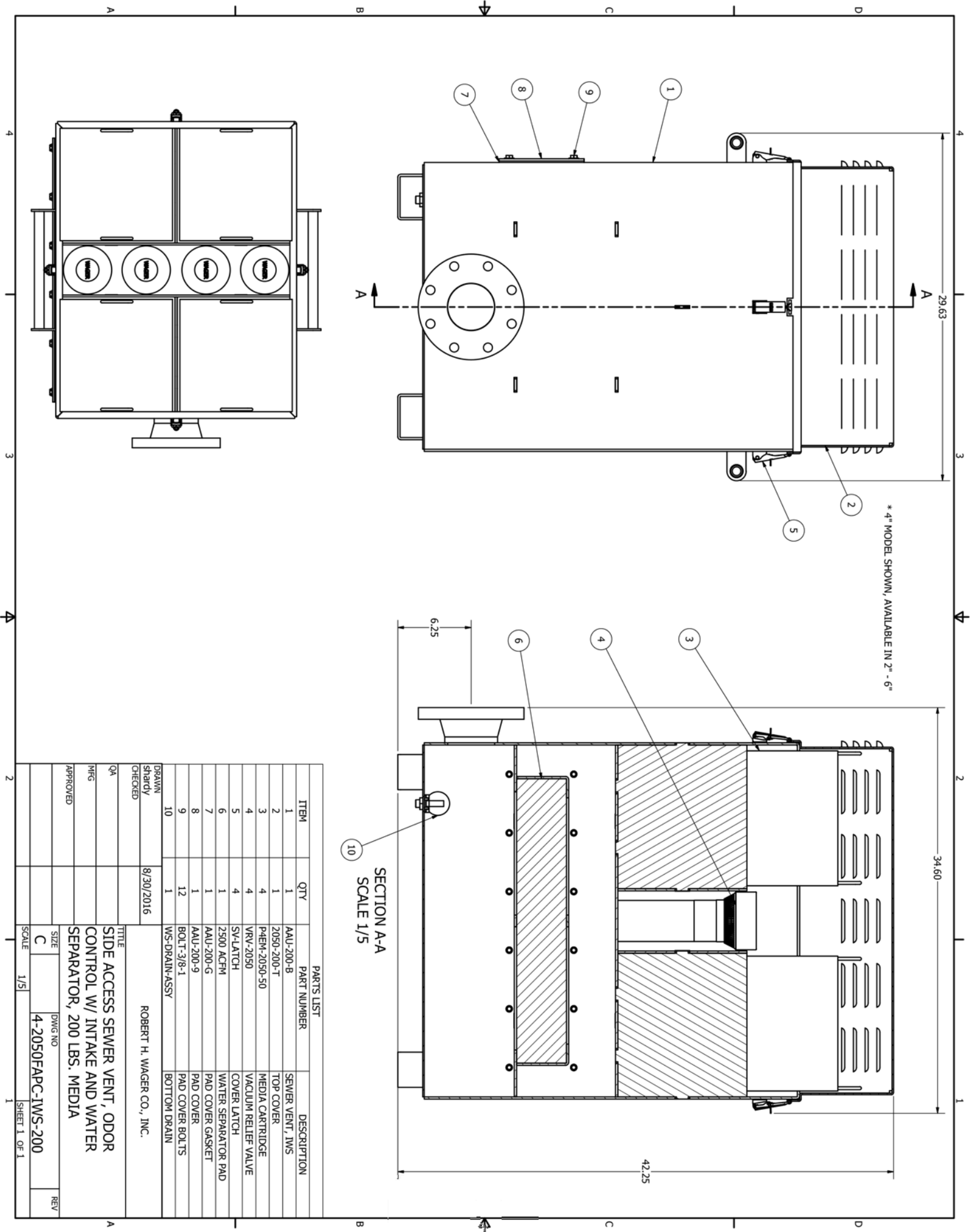
ITEM	QTY	PART NUMBER	DESCRIPTION
1	1	AAU-200-B	SEWER VENT, IWS
2	1	2050-200-T	TOP COVER
3	4	PAEM-2050-50	MEDIA CARTRIDGE
4	4	VRV-2050	VACUUM RELIEF VALVE
5	4	SV-LATCH	COVER LATCH
6	1	2500 ACFM	WATER SEPARATOR PAD
7	1	AAU-200-G	PAD COVER GASKET
8	1	AAU-200-9	PAD COVER
9	12	BOLT-3/8-1	PAD COVER BOLTS
10	1	WS-DRAIN-ASSY	BOTTOM DRAIN

DRAWN
Shardy
CHECKED
8/30/2016

QA
MFG
APPROVED

TITLE
SIDE ACCESS SEWER VENT, ODOR
CONTROL W/ INTAKE AND WATER
SEPARATOR, 200 LBS. MEDIA

ROBERT H. WAGER CO., INC.
SIZE
C
SCALE 1/5
DWG NO
4-2050FAPC-IWS-200
REV



2050-200

SPECIFICATIONS

- A.** This specification defines the requirements for a Wager 2050-200 Vent Scrubber, manufactured by Wager Company , Rural Hall, NC.
- B.** The 2050-200 consists of dry scrubbing media contained in a fabricated aluminum plate housing. It is powder coated grass green, with a 4" or 6" outlet.
- C.** The 2050-200 shall contain 200 lbs. of dry-scrubbing media that is engineered for the removal of H2S gas. The media is contained in (4) corrugated plastic containers that are 11" x 18" in size.
- D.** The airflow shall be designed for passive applications. The configuration shall be arranged so that the contaminated air shall flow from the bottom flange and be forced upward through the media bed and discharged through the ventilated openings.
- E.** The 2050-200 contains FOUR air admittance valves. They intake directly into the lines without any restrictions from the unit's media bed. This assures continued airflow during pumping sequences needed with the air release valves, and also with a vacuum sewer system where outside fresh air is required for system operation.
- F.** All components of the 2050-200 shall include:
1. A fabricated aluminum plate body, powder coated grass green.
 2. 200 lbs. of odor scrubbing media engineered in pellet form.
 3. 4" or 6" flanged connection – Optional metric flanges available.
 4. Tamper proof lockable hook and security latches.
 5. Disposable media corrugated plastic inserts.
- G.** Vent Scrubber Material
1. Fabricated Aluminum Plate
 2. FOUR corrugated plastic canisters that measure 11. 6" x 18". Each canister contains 50 LBS of odor scrubbing media.
 3. Latches in 316SS
 4. Hooks in 316SS
 5. 200 lbs. of odor scrubbing media designed for removal of H2S gas.
 6. 4" or 6" flanged connection with 7.5" (191mm) bolt circle – optional Metric flanges.
 7. Non-toxic, Landfill disposable media only.
- *** Plastic vent scrubbers that contain activated alumina media or carbon not accepted.**
- H.** Media Specification
1. Moisture content : 35% Max
 2. Crush Strength: 35% - 70% Max
 3. Abrasion: 4.5% Max
 4. Pellet Diameter: 1/16" (1.5mm-6.5mm)
1. Wager media only will be accepted due to its high level removal capacity. No equals will be accepted. Carbon will not be accepted.
- J.** Only UL certified media will be accepted in Wager's vent scrubber.
- K.** If other forms of media are used in this unit, it must be designed to be 25% larger with a minimum of 25% additional media.
- L.** The general contractor is responsible for all design cost changes, engineer review time, and testing verification.



WAGER
C O M P A N Y

www.wagerusa.com
336.9696909
Wager@wagerusa.com
Mpowers@wagerusa.com

2050-200

S P E C I F I C A T I O N S

N. Built in Water Separator / mist eliminator

1. The body of the water separator is constructed from 50-52 H32 aluminum plate and is epoxy coated for protection from harsh environments.
2. The overall measurements of the unit are 26.25" x 31.25" x 35"
3. 10" flanged threaded aluminum connection provided for attaching to the 2050-1350
4. A Kerick Valve Assembly with float allows for excess accumulated water to be expelled.
5. An inlet stem provides an exit for accumulated moisture from the air release valve.
6. A Nitrile gasket allows for a tight fit of the aluminum plate cover.

O. Mist Eliminators

1. Highest collection efficiency of ANY mesh-type media: 99+% @ 1 μ m.
2. Composite pads of various mesh styles allow for optimization of efficiency, pressure drop, and pluggage resistance.
3. Able to handle the widest range of gas velocities and contaminant levels.
4. High void spaces (94-97%) and the largest fiber diameters contribute to the highest resistance to fouling.
5. Lower pressure drops than traditional knitted mesh.
6. Custom fabrication to conform to any Wager 2050 series.
7. The media is cleanable & reusable for extended service life in the harshest environments.
8. Wide range of materials of construction available, including polypropylene, PVDF, ETFE and PFA, to meet any level of temperature and corrosion requirements.



WAGER
C O M P A N Y

www.wagerusa.com
336.9696909
LWager@wagerusa.com
Mpowers@wagerusa.com

2050-200

INSTALLATION GUIDE



1. Remove media canisters. Ensure all of the original plastic wrap is removed from canisters. Media is in pellet form and should move freely to allow air to vent through. Check media pellets to ensure they are NOT wet.



2. Reinstall media canisters ensuring they are flush with the valve's inner chamber.



3. Place unit in desire location. Bolt flange to vent stack.



4. Secure the lid with the four lockable latches



WAGER
C O M P A N Y

*** 2050-450 PICTURED. MODEL 2050-200 FOLLOWS THE SAME STEPS.**

www.wagerusa.com
336.9696909
LWager@wagerusa.com
Mpowers@wagerusa.com

2050-200

INSTALLATION INSTRUCTIONS

- Pour a concrete pad with bolts in place for slated feet on the unit.
- If preferred, a level crush stone pad may be used in lieu of concrete.
- Set the 200 on pad or stone, and bolt it down.
- Remove media from the unit.
- If the 200 is being used in conjunction with an ARV, get a complete blowout of the ARV so that there is no big slug of air through the media bed.
- Unwrap the media canisters and place in the unit.
- Reinstall the 200 cover, and lock down.



WAGER
C O M P A N Y

www.wagerusa.com
336.9696909
LWager@wagerusa.com
Mpowers@wagerusa.com

2050-200

REPLACEMENT PARTS LIST

2050-200-B-6	2050-200-SA BODY ASSEMBLY
2050-200-T	2050-200 COVER
FLNG GASKET 6-4	6-4 FLANGE GASKET
VRV-2050	2050-VACUUM RELIEF VALVE
OCU-2050-50	50 LB. CARTRIDGE ODOR CONTROL MEDIA
233-GASKET-3	GASKET, 3.0 "I.D.x 3.5" O.D.
SV- LATCH	UNDER CENTER DRAW LATCH
2500 ACFM	MIST ELIMINATOR PAD
WS-DRAIN-ASSY	WATER SEPARATOR VALVE
AAU-200-G	2050-200 DOOR GASKET



WAGER
C O M P A N Y

www.wagerusa.com
336.9696909
LWager@wagerusa.com
Mpowers@wagerusa.com

2050-200

MAINTENANCE GUIDE



1. Unlatch and remove lid from unit. Visually inspect the media canisters and air intake valves.



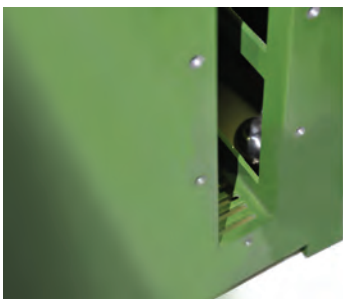
2. Inspect the media. Make sure it is dry. Shake or stir media pellets inside canisters every 3-6 months for maximum media life.



3. Unbolt water separator access plates. Inspect bolts, washers, and gasket. Remove water separator pads.



4. Wash water separator pad with hose.



5. With the water separator pad out, inspect float drain assembly. Remove any debris and ensure drain is clean.



6. Reinstall water separator pads, gaskets, and water separator pad plates back onto the unit. Secure the lid with the four lockable latches

2050-450 PICTURED. MODEL 2050-200 FOLLOW THE SAME STEPS.

2050-200

TEST PROCEDURES

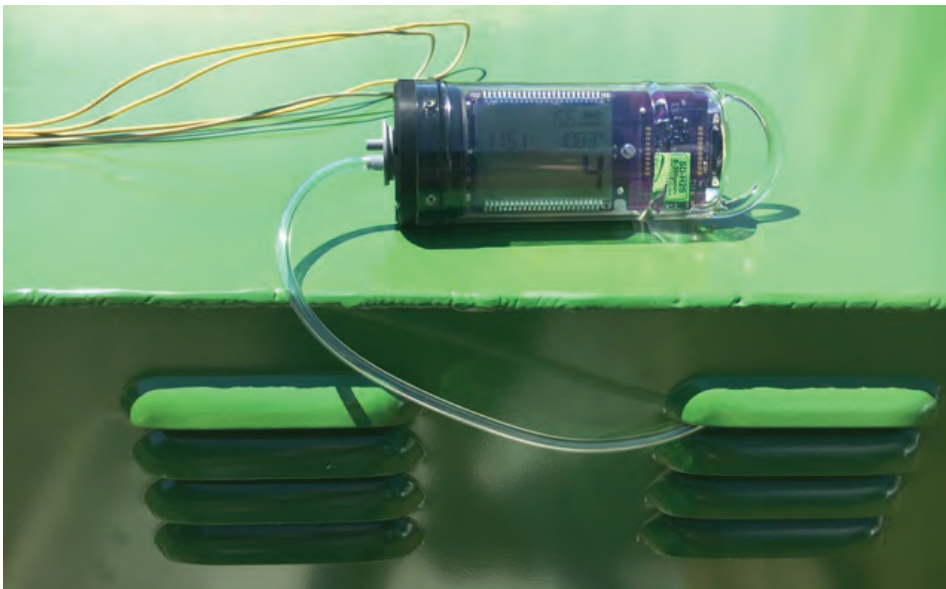


(Example of Side flange procedure.)



(Example of bottom flange procedure.)

1. Place Odor Logger in the bottom chamber of the unit, below the media baskets.



2. Place Odor Logger on top of media baskets, or place tube through the vent louvers.



WAGER
C O M P A N Y

www.wagerusa.com
336.9696909
LWager@wagerusa.com
Mpowers@wagerusa.com

WARRANTY

Wager warrants our full line of Odor Control Valves for a period of twelve (12) months from the date of purchase of our products. This warranty covers the repair or replacement of any faulty manufacture of equipment produced by Wager. No allowance will be granted for repairs or alterations made by the Buyer.

The (1) year warranty does not cover Wager's engineered media. The media is meant to be replaced over time after scrubbing odorous gases from various sewer applications. Replacement of Wager's media with unauthorized material will affect the Limited Warranty of our products.



WAGER
C O M P A N Y

www.wagerusa.com
336.9696909
LWager@wagerusa.com
Mpowers@wagerusa.com